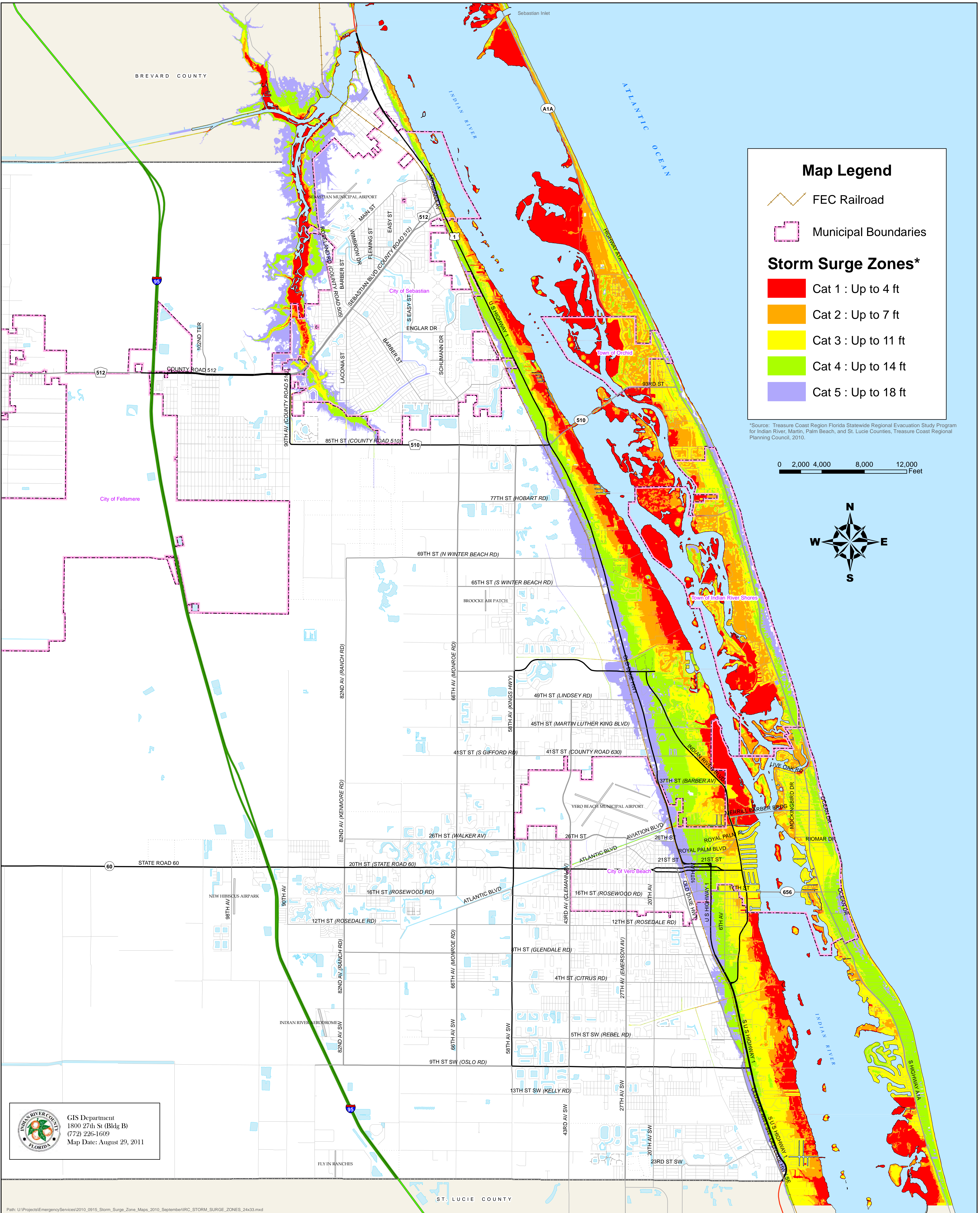




# Storm Surge Zones

## Indian River County, Florida



**Map Legend**

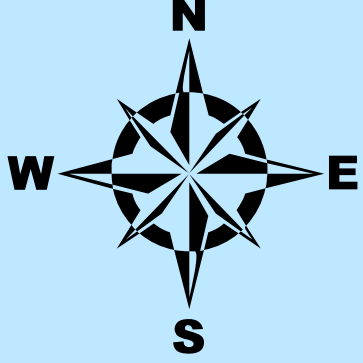
- FEC Railroad
- Municipal Boundaries

**Storm Surge Zones\***

- Cat 1 : Up to 4 ft
- Cat 2 : Up to 7 ft
- Cat 3 : Up to 11 ft
- Cat 4 : Up to 14 ft
- Cat 5 : Up to 18 ft

\*Source: Treasure Coast Region Florida Statewide Regional Evacuation Study Program for Indian River, Martin, Palm Beach, and St. Lucie Counties, Treasure Coast Regional Planning Council, 2010.

0 2,000 4,000 8,000 12,000 Feet



GIS Department  
 1800 27th St (Bldg B)  
 (772) 226-1609  
 Map Date: August 29, 2011